



## Disjuncteur general, h1000, 50kA, 3 poli, LSI

Descriere	Amb.	Art Nr.
Disjuncteur general h1000 3P 50kA 800A LSI	1	<b>HNE800H</b>
Disjuncteur general h1000 3P 50kA 1000A LSI	1	<b>HNE970H</b>

HNE800H



## Disjuncteur general, h1000, 50kA, 4 poli, LSI

Descriere	Amb.	Art Nr.
Disjuncteur general h1000 4P 50kA 800A LSI	1	<b>HNE801H</b>
Disjuncteur general h1000 4P 50kA 1000A LSI	1	<b>HNE971H</b>

HNE801H



## Disjuncteur general, h1000, 70kA, 3 poli, LSI

Descriere	Amb.	Art Nr.
Disjuncteur general h1000 3P 70kA 800A LSI	1	<b>HEE800H</b>
Disjuncteur general h1000 3P 70kA 1000A LSI	1	<b>HEE970H</b>

HEE800H



## Disjuncteur general, h1000, 70kA, 4 poli, LSI

Descriere	Amb.	Art Nr.
Disjuncteur general h1000 4P 70kA 800A LSI	1	<b>HEE801H</b>
Disjuncteur general h1000 4P 70kA 1000A LSI	1	<b>HEE971H</b>

HEE801H



## Întreprupator, 3 poli

Descriere	Amb.	Art Nr.
Întreprupator h1000 3P 800A	1	<b>HCE800H</b>
Întreprupator h1000 3P 1000A	1	<b>HCE970H</b>

HCE800H



HCE801H

## Întreprupator, 4 poli

Descriere	Amb.	Art Nr.
Întreprupator h1000 4P 800A	1	<b>HCE801H</b>
Întreprupator h1000 4P 1000A	1	<b>HCE971H</b>



HXC021H

## Contact auxiliar

Descriere	Amb.	Art Nr.
Contact auxiliar h250-h1600 ND+NI 230V	1	<b>HXC021H</b>
Contact semnalizare, h250-h1600 ND+NI 230V	1	<b>HXC024H</b>
Contact auxiliar ND+NI 125V	1	<b>HXC025H</b>
Contact de semnalizare, ND+NI 125V	1	<b>HXC026H</b>



HXC001H

## Bobina emisie

Descriere	Amb.	Art Nr.
Bobina declansare h250-h1600 24V cc	1	<b>HXC001H</b>
Bobina declansare h250-h1600 48V cc	1	<b>HXC002H</b>
Bobina declansare h250-h1600 100-120V ca	1	<b>HXC003H</b>
Bobina declansare h250-h1600 200-240V ca	1	<b>HXC004H</b>
Bobina declansare h250-h1600 380-450V ca	1	<b>HXC005H</b>



HXE011H

## Bobina declansare tensiune minima

Descriere	Amb.	Art Nr.
Bobina minima tensiune h800-h1600 24VDC	1	<b>HXE011H</b>
Bobina minima tensiune h800-h1600 110-120VAC	1	<b>HXE013H</b>
Bobina minima tensiune h800-h1600 220-240VAC	1	<b>HXE014H</b>
Bobina minima tensiune h800-h1600 380-415VAC	1	<b>HXE015H</b>
Bobina minima tensiune intarz. h800-h1600 4P 24VDC	1	<b>HXF051H</b>
Bobina minima tensiune intarz. h800-h1600 4P 110-120VAC	1	<b>HXF053H</b>
Bobina minima tensiune intarz. h1600 4P 220-240VAC	1	<b>HXF054H</b>
Bobina minima tensiune intarz. h800-h1600 4P 380-415VAC	1	<b>HXF055H</b>
Bobina minima tensiune intarz. h800-h1600 3P 24VDC	1	<b>HXE051H</b>
Bobina minima tensiune intarz. h800-h1600 3P 110-120VAC	1	<b>HXE053H</b>
Bobina minima tensiune intarz. h800-h1000 3P 220-240VAC	1	<b>HXE054H</b>
Bobina minima tensiune intarz. h800-h1600 3P 380-415VAC	1	<b>HXE055H</b>



HXE030H

## Mâner rotativ direct

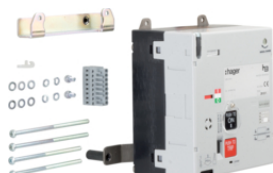
Descriere	Amb.	Art Nr.
Comanda rotativa directa H800-H1000	1	<b>HXE030H</b>



HXE031H

## Mâner rotativ extensiv

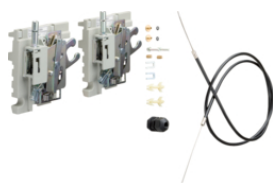
Descriere	Amb.	Art Nr.
Comanda rotativa extinsa H800-H1000	1	<b>HXE031H</b>



HXE040H

## Comanda motorizata

Descriere	Amb.	Art Nr.
Comanda motorizata h800-h1000 24-48V DC	1	<b>HXE040H</b>
Comanda motorizata h800-h1000 100-240VAC	1	<b>HXE042H</b>



HXE065H

## Interblocaj mecanic

Descriere	Amb.	Art Nr.
Interblocaj mecanic h800-h1000	1	<b>HXE065H</b>



HYE031H

## Conexiune spate, 3 poli

Descriere	Amb.	Art Nr.
Borne racord spate H800-H1000 3P	1	<b>HYE031H</b>
Borne racord spate h1000 3P	1	<b>HYE033H</b>



HYE032H

## Conexiune spate, 4 poli

Descriere	Amb.	Art Nr.
Borne racord spate H800-H1000 4P	1	<b>HYE032H</b>
Borne racord spate h1000 4P	1	<b>HYE034H</b>



## Capac terminal, 3 poli

Descriere

Amb. Art Nr.

Masca borne H800-H1000 3P lung

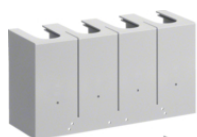
1 **HYE021H**

Masca borne H800-H1000 3P scurt

1 **HYE025H**



HYE021H



## Capac terminal, 4 poli

Descriere

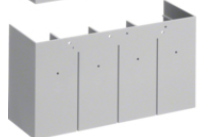
Amb. Art Nr.

Masca borne H800-H1000 4P lung

1 **HYE022H**

Masca borne H800-H1000 4P scurt

1 **HYE026H**



HYE022H